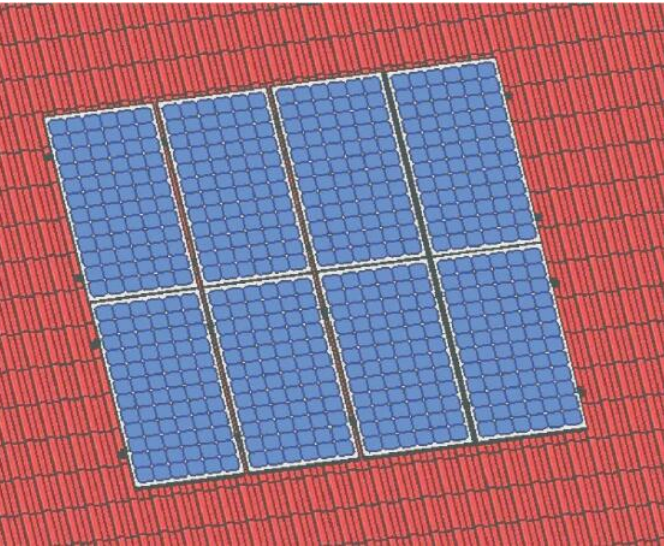


Mounting Structure GS910 Type

Pitch Tile Roof Solar Mounting



Features

Place of use: Pitch Tile Roof top

Wind load: max. 55m/s

Snow load: max. 1.5kN/m²

Solar module: Framed and unframed

Module orientation: Vertical or horizontal

Roof Angle: 0-60°

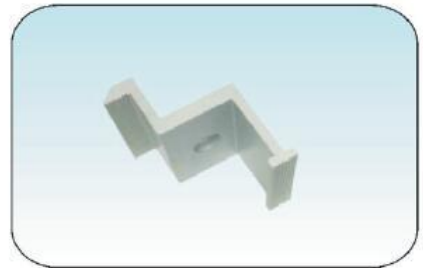
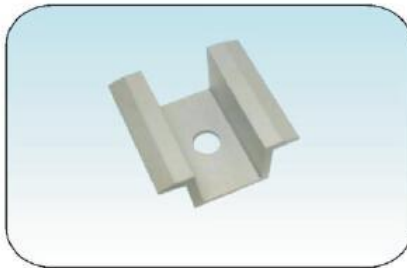
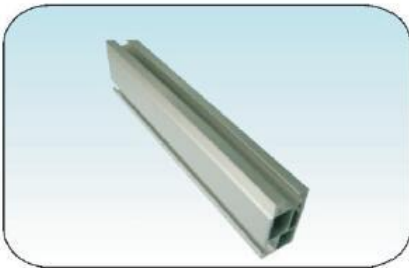
Surface treatment: Stainless steel , Anodized Aluminum

Material: Stainless steel SUS304, Aluminum 6063-T5

Standard: Suit for EU, AU, US standard

Warranty: 10years on materials

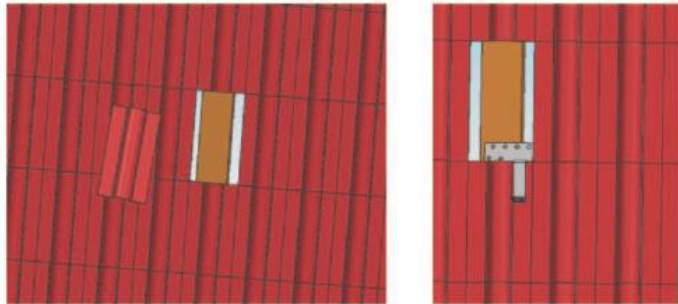
Components



Install Procedure

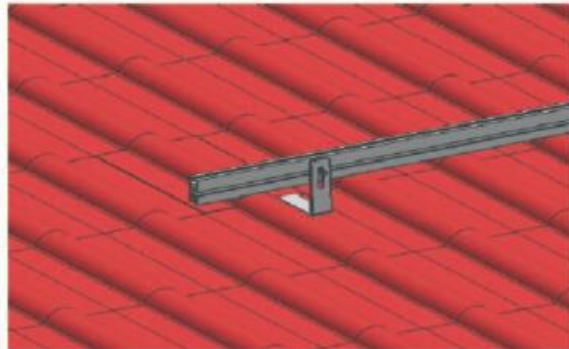
Step 1:

Move the tiles, fix hook on the purlin with tapping screws, as below:



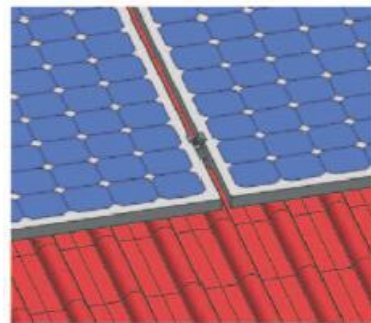
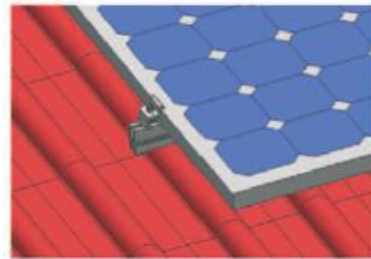
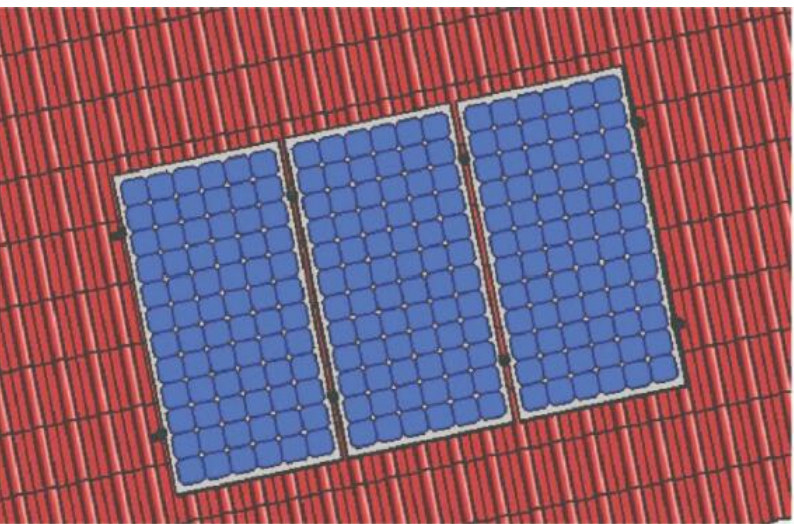
Step 2:

Install rail on the hook with T bolts, as below



Step 3:

Install solar panel with solar clamps and T bolts, as below:



Application

